

BLUE MOUNTAINS NATIONAL FORESTS LAND MANAGEMENT PLAN REVISION Inventory of Lands in the Plan Area that may have Wilderness Characteristics Lands included in Inventory (FSH 1909.12, 71.3)

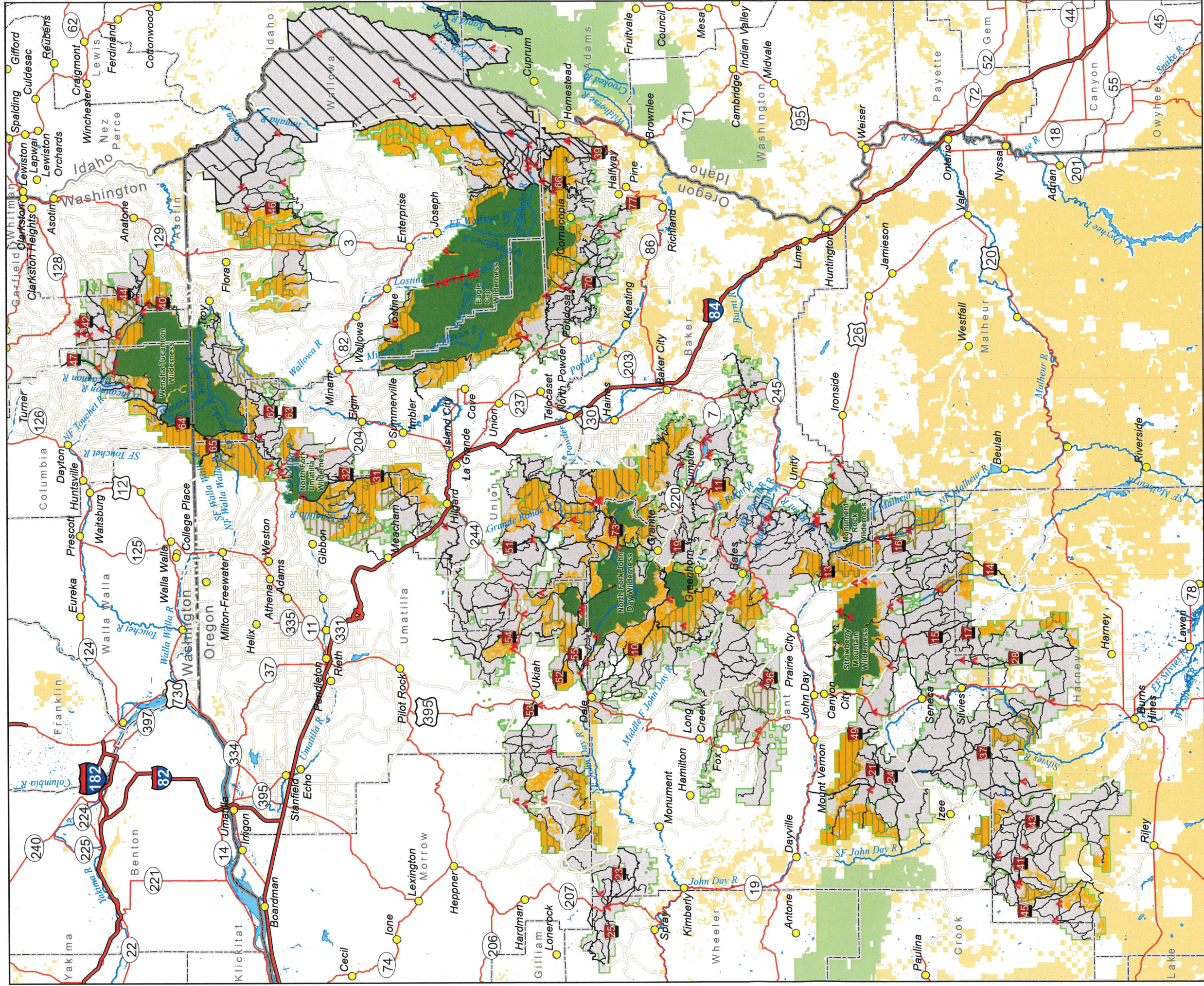
- Planning Area
- Malheur, Umatilla and Wallowa-Whitman National Forests
- Lands Removed from Inventory
- Lands Included in Inventory
- Designated Wilderness (Removed from Inventory)
- Inventoried Roadless Area (IRA)
- Hells Canyon NRA (not part of Project Area)
- Campground
- Interstate
- Highway
- County Roads
- Major Road
- Collector Road
- U.S. Forest Service
- Bureau of Land Management
- Private Land (lands shown in white)
- County

This product is produced from information prepared by the USDA, Forest Service, or from other suppliers. The Forest Service cannot assure the reliability or suitability of this information for a particular purpose. The data and product accuracy may vary due to compilation from various sources, including modeling and interpretation, and may not meet National Map Accuracy Standards. This information may be updated, corrected, or otherwise modified without notification.

The USDA is an equal opportunity provider and employer. Neither the Forest Service, nor any of its employees, makes any warranty, expressed or implied, including the warranties of merchantability and fitness for a particular purpose, or assumes any legal liability or responsibility for the accuracy, completeness, or usefulness of any information, apparatus, product or process disclosed, or represents that its use would not infringe privately owned rights.



Date: 4/16/2024 6:35 AM



BLUE MOUNTAINS NATIONAL FORESTS LAND MANAGEMENT PLAN REVISION Inventory of Lands in the Plan Area that may have Wilderness Characteristics Lands included in Inventory (FSH 1909.12, 71.3)

- Planning Area
- Malheur, Umatilla and Wallowa-Whitman National Forests
- Lands Removed from Inventory
- Lands Included in Inventory
- Designated Wilderness (Removed from Inventory)
- Inventoried Roadless Area (IRA)
- Hells Canyon NRA (not part of Project Area)
- Campground
- Interstate
- Highway
- County Roads
- Major Road
- Collector Road
- U.S. Forest Service
- Bureau of Land Management
- Private Land (lands shown in white)

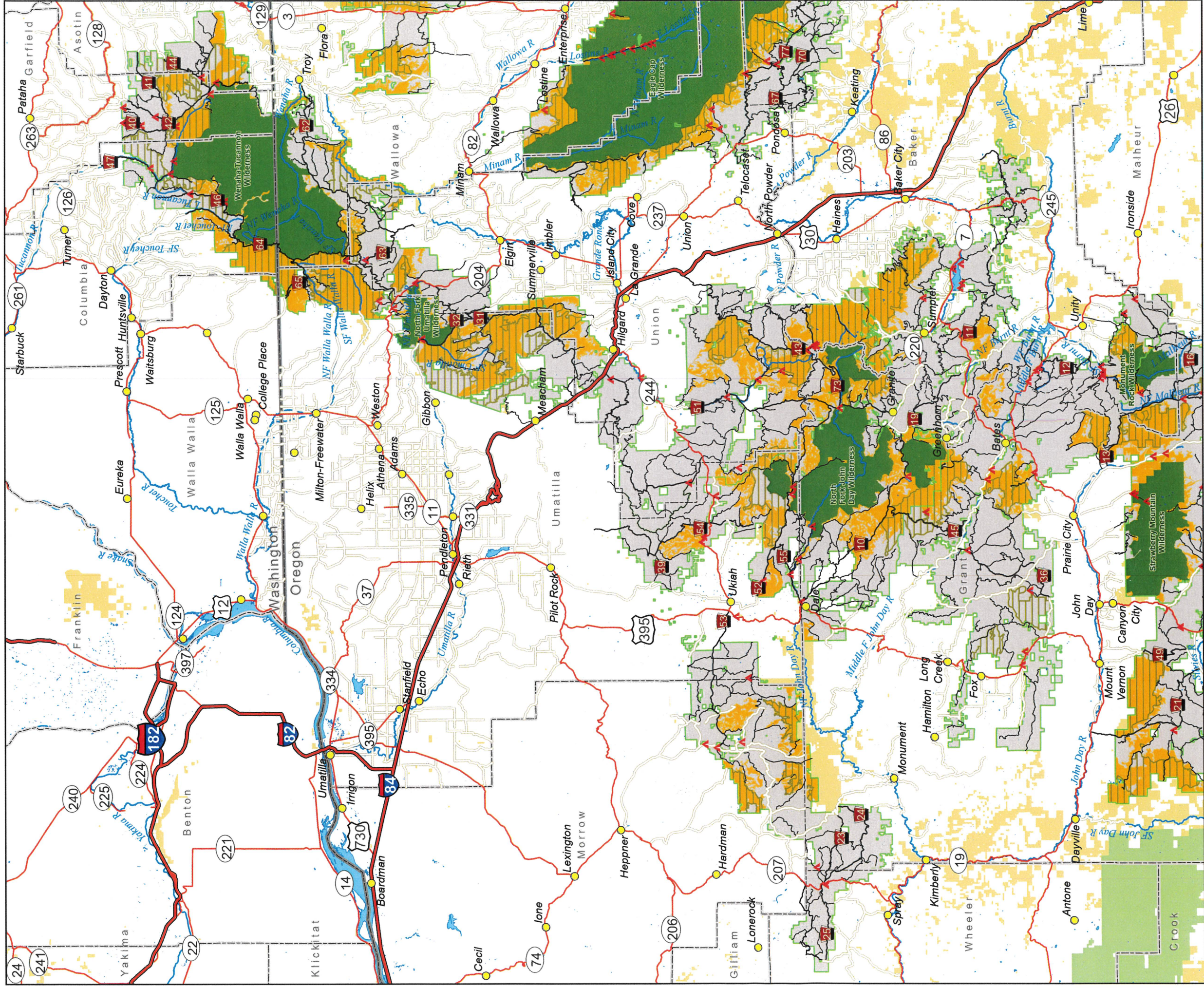
This product is produced from information prepared by the USDA, Forest Service, or from other suppliers. The Forest Service cannot assure the reliability or suitability of this information for a particular purpose. The data and product accuracy may vary due to compilation from various sources, including modeling and interpretation, and may not meet National Map Accuracy Standards. This information may be updated, corrected, or otherwise modified without notification.

The USDA is an equal opportunity provider and employer.

Neither the Forest Service, nor any of its employees, makes any warranty, expressed or implied, including the warranties of merchantability and fitness for a particular purpose, or assumes any legal liability or responsibility for the accuracy, completeness, or usefulness of any information, apparatus, product or process disclosed, or represents that its use would not infringe privately owned rights.



Date: 4/16/2024 6:35 AM



UMATILLA NATIONAL FOREST LAND MANAGEMENT PLAN REVISION Inventory of Lands in the Plan Area that may have Wilderness Characteristics Lands included in Inventory (FSH 1909.12, 71.3)

- Planning Area
- Malheur, Umatilla and Wallowa-Whitman National Forests
- Lands Removed from Inventory
- Lands Included in Inventory
- Designated Wilderness (Removed from Inventory)
- Inventoried Roadless Area (IRA)
- County
- Interstate
- Highway
- County Roads
- Major Road
- Collector Road
- U.S. Forest Service
- Bureau of Land Management
- Private Land (lands shown in white)

This product is produced from information prepared by the USDA, Forest Service, or from other suppliers. The Forest Service cannot assure the reliability or suitability of this information for a particular purpose. The data and product accuracy may vary due to compilation from various sources, including modeling and interpretation, and may not meet National Map Accuracy Standards. This information may be updated, corrected, or otherwise modified without notification.

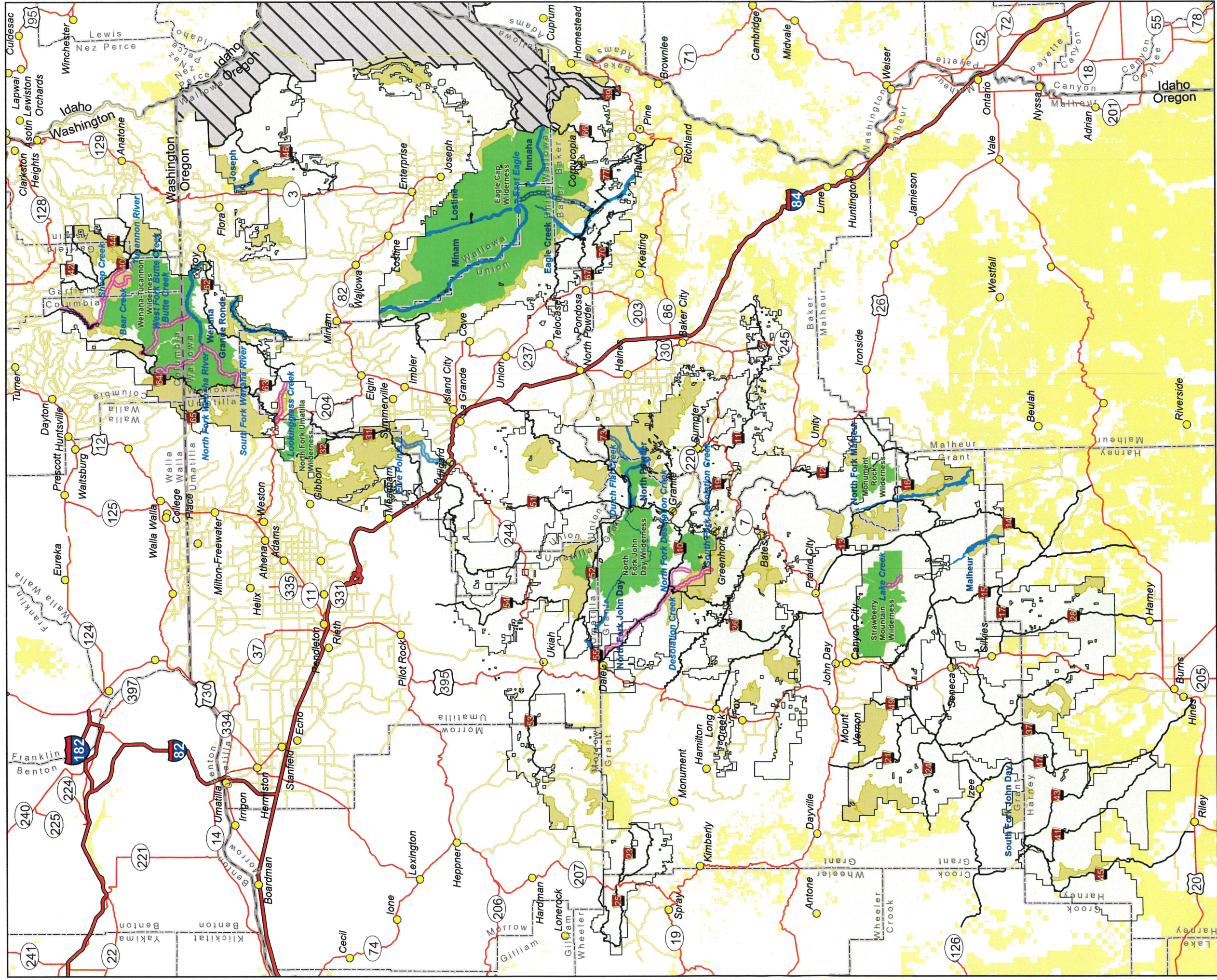
The USDA is an equal opportunity provider and employer.

Neither the Forest Service, nor any of its employees, makes any warranty, expressed or implied, including the warranties of merchantability and fitness for a particular purpose, or assumes any legal liability or responsibility for the accuracy, completeness, or usefulness of any information, apparatus, product or process disclosed, or represents that its use would not infringe privately owned rights.



Date: 4/11/2024 11:23 AM





BLUE MOUNTAINS FOREST PLAN REVISION DRAFT Wild & Scenic River Inventory

- Planning Area
- Malheur, Umatilla and Wallowa-Whitman National Forests
- Hells Canyon NRA (not part of Project Area)
- Designated Wilderness
- Inventoried Roadless Area (IRA)
- Eligible Wild & Scenic River
- Suitable Wild & Scenic River
- Designated WSR
- Interstate
- Highway
- Major Road
- County Roads
- State
- County
- Bureau of Land Management
- Private Land
- U.S. Forest Service

This product is reproduced from information prepared by the USDA, Forest Service or from other suppliers. The Forest Service cannot assure the reliability or suitability of this information for a particular purpose. The data and product accuracy may vary due to compilation from various sources, including modeling and interpretation, and may not meet National Map Accuracy Standards and interpretation, and may not be updated, corrected or otherwise modified without notification.

The USDA is an equal opportunity provider and employer.

Neither the Forest Service, nor any of its employees, makes any warranty expressed or implied, including the warranties of merchantability and fitness for a particular purpose, or assumes any legal liability or responsibility for the accuracy, completeness, or usefulness of any information, apparatus, product or process disclosed, or represents that its use would not infringe privately owned rights.



Date: 4/16/2024 10:13 AM

